

THE WISSETT WEB

DELIVERED FREE TO EVERY HOME IN WISSETT

BIMONTHLY

NO 141

AUGUST 2020

ONLINE VERSION AT WWW.WISSETT.ONESUFFOLK.NET

FOR THE TIME BEING, the Wissett Web will still be available on line only. It is hoped that we can deliver again at the beginning of October.

Your editor and her husband are practising self-isolation because of underlying health issues in the household.

If someone you know wants a hard copy of this, please print it out and give it to them.

The Halesworth Volunteer Centre will help you with shopping or medication deliveries. Phone them on 875600.

Keep your distance!

THE WISSETT PLOUGH

It is with great sadness that we hear that The Plough will close at the end of July 2020. It has been a terrible time for people in hospitality enterprises and, in spite of offering takeaways and deliveries, the business has proved not to be viable.

We shall be very unhappy to see Toni and Alain move on to the next phase in their lives. We will miss Toni's cheerfulness and Alain's wonderful cooking. Meeting new friends and old in our pub. We wish them well in whatever ventures lie ahead.

COVID-19 - 29th July.

These instructions may alter, day by day, and seem to do so. These were the government guidelines on this day.

Face coverings, masks, snoods, bandanas etc., are now compulsory in shops, supermarkets, while ordering take-aways, on public transport, banks, building societies, post offices, train and bus stations and airports in England. If we do not comply we can be fined £100.

The latest instruction is that we can meet outside in our gardens or a public park. No more than 6 people together from multiple households, keeping at least 6 feet apart. Up to thirty people from two households can meet but people from different households must maintain social distancing throughout. Overnight stays are allowed.

Social distancing must be observed at all times. If people have to walk through the house to get to the garden they must not touch anything, door handles etc. In an enclosed space wear a mask until you reach the outside area.

Visitors need to take their own glass or cup, cutlery and plate. Wash your hands or use hand gel.

If using a loo in someone else's house, flush with the seat down. Spray from the toilet generates an aerosol and Covid-19 is in body fluids.

Use disinfectant wipes round the loo and paper disposable towels for drying hands.

No hugging...be paranoid...wipe down surfaces after people have left. Be safe...It hasn't gone away.

FISHING

THE FISHING LAKES ARE OPEN.

Bring the right money or pay by card



FOOD BANK

In these unprecedented times the Food Bank is in desperate need for contributions. 150 households a week are needing food boxes in our area. Many more people are in hardship due to loss of earnings and contributions have dropped by half.

If you can help, please drop off contributions in the church, or if you are in need go to Halesworth church hall on Wednesdays, 10.30 to 11.30.

Vouchers for fresh fruit and vegetables are available too.

If you would like to donate but cannot get out to do so, you can send a cheque. If you want to donate by cheque the account is Waveney Foodbank, and the address is Les Fearn, 15 De Lucy Close, Diss IP22 4YL. If you prefer to BACS it is to Lloyds Bank, sort code 77-66-12 account number 22139560 account name Waveney Foodbank.



VILLAGE TENT

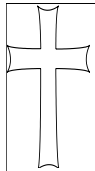


After August 1st the tent will be put into storage until next spring—so no more hirings this year.

Next year we'll have to find some new volunteers for the team to put up and take down.

We first had a tent at the Millennium—when some of the present team were recruited; and frankly, they're not what they were twenty years ago. *(Most are over 80! Ed)*

So, if you have a few hours to spare, a few times a year, please let David Ball know. tel 01986 469611



**NEWS FROM ST ANDREW'S
THE CHURCH IS NOW OPEN DURING THE
DAY.**

A few areas of the church have been put "out of bounds" but the atmosphere is almost unimpaired and Susan's flowers are helping enormously

There are no definite plans for services in Wissett church yet, but a reminder that a Eucharist is held in Halesworth Church every Sunday at 10.00a.m. - you need to book through the Revd. Jane Held if you want to go. The service is also sent out on Zoom. Please email Jane Held if you would like an invitation: jane@janeheld.co.uk .Jane emphasises that if anyone needs to talk to her in private, please telephone her on 07771556391.

It is expected that the Historic Churches Bike Ride will be held on Saturday 12th September, which will also be our Gift Day. We hope that all who support St Andrew's Church will be as generous as possible in these hard times—our income has fallen drastically.

We will try to be as imaginative in planning Harvest Festival without singing on 11th September and have to think that the same restrictions might still prevail when we get to the Carol Service.

Nick Evans, Churchwarden.

PARISH COUNCIL NEWS

The Parish Council held a Virtual meeting via Zoom on Thursday, 16th July 2020.

REPORTS:

VAS will be in use in September.

Village Sign will be finished mid July. Post to be refurbished at a cost of about £100

Potholes outside Brickhill Cottages. SCC has done nothing. Clerk will chase again.

Footpath 4 has alleged unauthorised works/landfill adjacent to the public footpath near Hill Farm. The Environment Agency called on 10th July and will now issue a "Cease and desist" order which means the owner of the mattresses must stop bringing them on site and must remove those that are there. It is likely he will have a 3-week window in which to comply.

The road that floods outside Valley Vineyards. Tony Goldson has authorised highways repair.

Trees on the Village Field have suffered due to frosts and dry weather. Camila Prior and Matthew Wetmore will inspect and report back to the Parish Council.

Village Christmas Tree. It was resolved, in principle, to adopt the Tree. Clerk to get more details of requirements.

The Budget for the year 2020-2021 was reviewed.

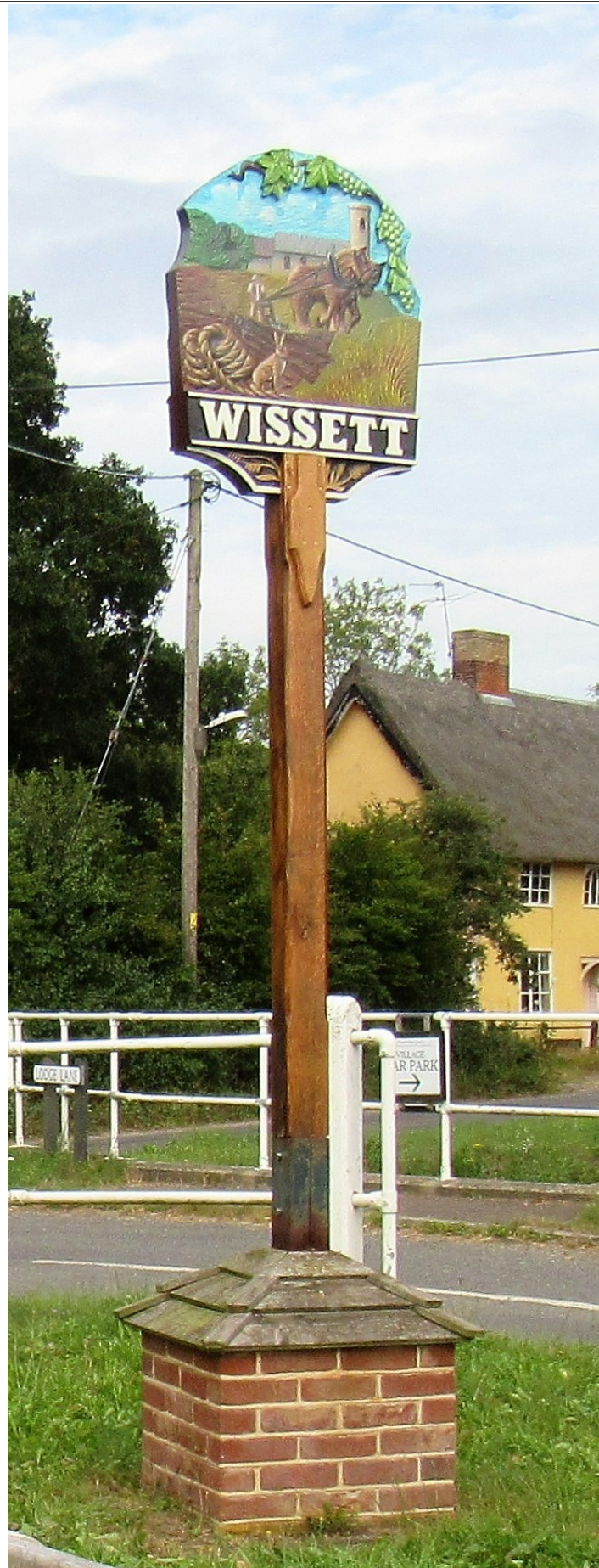
The Village Asset Register was reviewed.

Account balances at 10th July - Current Account £4,637.03
Deposit Account £11,964.52

Date of next meeting: Planned for Thursday 17th September 2020 at 7.30. The current situation demands that it will be virtual via Zoom and may require cancelling or postponing. Meeting closed at 9.00pm.

Bill Simpson
Parish Clerk
email address – wissettparishclerk@outlook.com

THE NEW VILLAGE SIGN IS IN PLACE !
And worth waiting for. No ceremony for Covid reasons, but have a look. It's superb and should last longer than the other one as its made of resin.



Deliveries from Halesworth to Wissett

1. Allens Butchers. Meat. 872132
2. Boots chemist 834900
3. Cottage Kitchen. Meals. 873236
4. Cutlers Hill Pharmacy. 835877
5. Edwards. Cooking by appointment only. 873763
6. Farmhouse Bakery teamed with Melons. 895955
7. Feed Barn. Pet food supplies. 948100 or 07989757671
8. Fit2Vape Ltd. 874550
9. Focus Organic. Min spend £30. 872899
10. Melons teamed with Farmhouse bakery. Free delivery over £10. 874562
11. Palmers butchers (small charge) 872108
12. Reability. Incontinence products, gloves, urinals 873803
13. Singtong Neeyom Thai Restaurant. Takeaway only. 873737
14. The Angel Hotel. Meals. Min spend £15. £2 delivery. 873365
15. Halesworth Florist/Greengrocer. Fruit/veg/store cupboard ingredients. 873100
16. The Hot Meal Service. 835895
17. Triple Plea. Menu on line. 874750
18. Thoroughfare Deli. 5-mile radius. Min spend £15 872000
19. Truly Traceable frozen pies/sausage rolls. 835980
20. Happy House Chinese takeaway. 872165
21. Seashell Fish and chips. Open Thursday to Saturday.872293

That's all for now but the list changes from week to week.

Check the website of Halesworth Town Council.

The Halesworth Volunteer Centre is ready and very willing to shop for you at the Co-op, collect medications and deliver them to your door. They are a friendly voice at the end of the telephone and can arrange for food bank support and vouchers. 875600

Most shops in the Thoroughfare have reopened:

Adnams wine shop in the marketplace is open most of the time.

Wotsits, Monday to Saturday, 9 - 1 closed Thursdays

Focus Organic is open

Patrick's Newsagent, Farmhouse Bakery, The Halesworth deli and both butchers, Allen's and Palmer's open already.

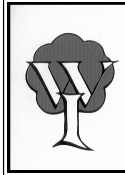
Coopers and the Post Office are open every day

Boots the chemist is open.

WISSETT CARPET BOWLS



No bowls until further notice



WOMEN'S INSTITUTE

100 years old!

ON HOLD!



RUMBURGH AND DISTRICT GARDEN CLUB (incl. Wissett)

All activities postponed for the time being
There are PLANTS FOR SALE at Rydal Mount.

WISSETT OPEN GARDENS

Cancelled.

WISSETT HORTICULTURAL SHOW

Cancelled

WISSETT VILLAGE BARBECUE

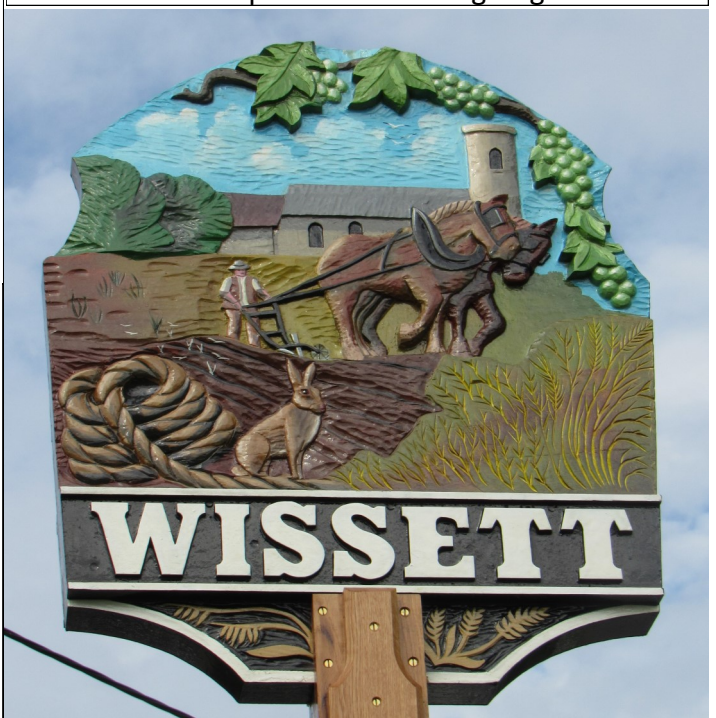
Cancelled

KEEP EXERCISING!

DON'T BECOME A COUCH POTATO!

There are some circular walks round Wissett that take in our own Bonds Farm Shop. Lovely fresh local vegetables and fruit in season...also flowers to beautify your homes,

Close-up of the new village sign.



WISSETT VILLAGE HALL

To book the hall phone Lyn Elliott on 872460 or call at Rickyards, Mill Road. The hall costs £6 per hour for the duration of the event and all tables, chairs, crockery, cutlery etc are included in the hire charge. Heating is by a £1 or £2 slot meter. There is a returnable deposit of £50

MIKE KING. 07710984663 or 01986 875974

BIRD TROUBLES SOLVED:

Chimney cowls, vent caps, bird guards fitted.

Flexible liners. Ladderwork.

Woodburning stoves installed/refurbished

Free inspection and advice service.



Hair dressing in your own home. Call Ka-

CALVER ELECTRICAL

Domestic Rewires ~~~

Consumer Unit up-grades

Extra Sock-
~~~

ets  
Lighting

### **“Beck Cottage Studio”**

Delightful self-catering holiday accommodation

## **HETTY'S NEEDLES**

Knitting and crochet classes at Hetty's house in Rumburgh on Monday mornings. If you would like to come along phone Hetty on 01986 785081



## **BOND'S FARM SHOP, WISSETT**

**Local produce**

Derek and Cynthia Nunn offer you fresh home grown fruit and vegetables in season at competitive prices.

**VILLAGE TENT. 30 feet by 10 feet.**

**Rates for the hire of the village tent:**

**Wissett residents.....£35 Non-residents.....£70**

**Phone David Ball if you want to hire it: 469611**

**Help sometimes needed on the day if possible.**

## **IAN WOOD**

**LAWN MOWER & STRIMMER REPAIRS**

*Ride-ons, hovers, petrol-driven, electric*

*tel/fax 01986 782340*



## LOCAL SCOUT ASSOCIATION

**Beavers, Cubs and Scouts**  
**Meetings on Mondays, Wednesdays and Fridays.**  
**Contact Brian Howard at 1 Brickhill Cottages Wissett**  
**01986 875551**

## **WISSETT FARM HOLIDAYS**

### **RARE BREED NORFOLK HORN LAMB**

From the Wissett Flock

Whole or half lambs available to order

**HAPPY FEET!** By Susan Fitch.

General foot health care...ingrown toenails, Corns, calluses, verrucas, painful hard skin, Deep tissue massage, thick nails trimmed.  
Home visits. Phone 01986 872067 or 07497371073

## **USEFUL INFORMATION**

### DOCTOR

Cutlers Hill Surgery, Halesworth 874618

### PLUMBING & OIL-FIRED BOILER MAINTENANCE

Kevin Hawes 874708

### AVON TOILETRIES

Hannah Pretty, 3, Brickhill Cottages, Wissett 835780

### BUILDING CONSULTANT:

Al Campbell. Design and Build. 874976

### DOG GROOMING/BOARDING

Byebrue 785264

### ELECTRICAL

Chris Calver 07777675204 or 874046

### FOOT CARE PRACTITIONER

Susan Fitch. Home visits 01986 872067 or 07497371073

Jane Parker. TCFCDip. House visits. 07732048837

### GARDEN PLANTS

For sale outside 20 The Street and 9 The Street

### MILK

WILL's LOCAL Marybelle Milk and cream. 0800 434 6212

### WINES

Wissett Wines 07867009967

MOBILE LIBRARY. Monthly, Thursdays 2.05 - 2.25.

### ALCOHOLICS-ANONYMOUS

at The Harmony Centre Walpole 0207 40 30 888

If you want to advertise in the Wissett Web, please phone the Editor. 01986 469611

Any news, views or comments for inclusion in the Wissett Web to Jenny Ball, Editor, Birches, Wash Lane, Wissett. 01986 469611

**BEFORE 20th SEPTEMBER**

**Please note: The editor's decision is always final.**